



Profiles Estate Agents

6 Mason Court

, Hinckley, LE10 0JY

Offers In The Region Of £145,000

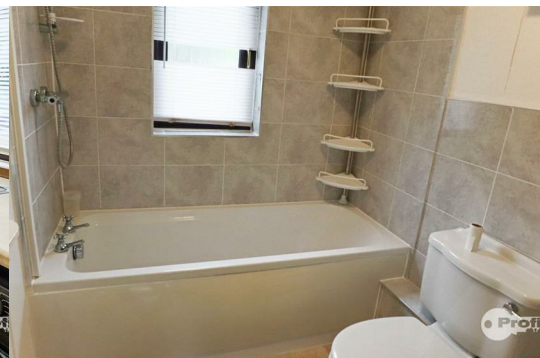


A spacious, two bedroomed attractively presented first floor maisonette, ideally located within walking distance of Hinckley's town centre and all local amenities.

The property has the additional benefits of gas fired central heating (combination boiler), PVCu double glazing, bathroom with shower, modern fitted kitchen, spacious lounge/dining room and communal gardens.

Conveniently located and within commuting distance of all major road links, such as the A5, M69, M1 and M6.

NO CHAIN.



Ground floor reception hall

PVCu door, staircase to first floor.

Landing 18'4" (max) x 2'11". (5.61 (max) x 0.90m.)

Having double glazed Velux roof light and roof void access hatch.

Kitchen (front) 10'8" x 8'0" (3.25 x 2.45)

Having range of base and wall units (5 base and 5 wall), associated work surfaces, radiator, PVCu double glazed window, built in cupboard off with wall mounted gas fired combination boiler (Worcester 532/1).

Bathroom (front) 8'4" x 5'7" (2.53 x 1.71)

Full suite, panelled bath with an electric shower, wash hand basin, low flush w.c, radiator and obscure PVCu double glazed window,

Bedroom 1 (rear) 10'0" x 9'4" (3.04 x 2.84)

PVCu double glazed window, radiator and fitted triple wardrobe.

Bedroom 2 (rear) 9'11" x 8'2" (3.03 x 2.5)

PVCu double glazed window and radiator.

Spacious Lounge /dining room (side) 23'8" x 11'6" max (7.22 x 3.52 max)

Having two UPVC double glazed windows, central heating radiator.

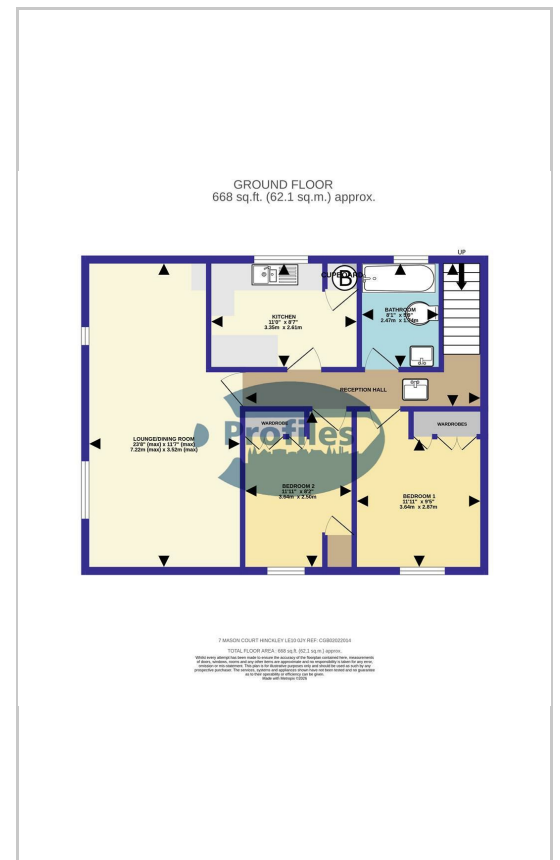
Outside

Communal gardens and parking.

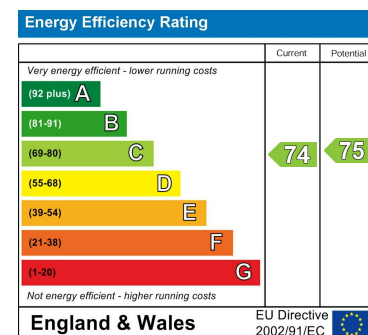
Area Map



Floor Plans



Energy Efficiency Graph



These particulars, whilst believed to be accurate are set out as a general outline only for guidance and do not constitute any part of an offer or contract. Intending purchasers should not rely on them as statements of representation of fact, but must satisfy themselves by inspection or otherwise as to their accuracy. No person in this firm's employment has the authority to make or give any representation or warranty in respect of the property.

28-30 New Buildings, Hinckley, Leicestershire, LE10 1HW

Tel: 01455 613555 Email: profilesea@aol.com <https://www.profiles-estates.co.uk>